

Joy's keys to Tachyporinae

by Mark G. Telfer, version 2, 11th Feb. 2012.

Pp. 82 - 92 and Plates 25 - 27 in Joy, N.H. (1932). *A practical handbook of British beetles*. Two volumes. H.F. & G. Witherby. Reprinted in slightly reduced format in 1976 by E.W. Classey Ltd, Faringdon. Out of print but available on CD-ROM from Pisces Conservation.

The original text was scanned and processed through Optical Character Recognition. The resultant text was then manually checked against the original to spot and correct any errors introduced by the OCR process. This version has then been edited to update nomenclature, and to add additional species and a few corrections and comments. Nomenclature follows Duff (2008) which should be consulted if authority names are required.

Please treat this as a test key and let me have any and all comments, corrections and updates. I have already added some of my own in text boxes or as footnotes. This is now a live document with scope for improvement!

Joy's concept of Tachyporinae included all the modern-day Tachyporinae, Habrocerinae and Trichophyinae as well as the genus *Cypha* (Aleocharinae). This document has been adapted to cover only the modern-day Tachyporinae.

The length is not very trustworthy in these, because the hind-body is so liable to be contracted up in drying.

KEY TO TRIBES

- 1 (2). Sutural margins of el. strongly bordered, suture raised (Pl. 25,6-13, 26,1-4).
..... **MYCETOPORINI**
2 (1). Sutural margins of el. simple, suture not raised (Pl. 26,5-10, 27)..... **TACHYPORINI**

MYCETOPORINI

The ♂ has front tarsi only slightly more dilated than ♀.

KEY TO GENERA

- 1 (2). Last joint of maxillary palp much narrower than penultimate (Pl. 25,6-13). [Th. red to black; L. 2.8-6.5 mm.] **MYCETOPORUS & ISCHNOSOMA**
2 (1). Last joint of maxillary palp not much narrower than penultimate (Pl. 26,1-4).
3 (4). Joint 3 of ant. about twice as long as 2, last joint of maxillary palp scarcely elongate¹, and hind-body slightly tapering (Pl. 26,1); th. entirely black, or if red, el. confusedly punctured throughout (except in *Bolitobius castaneus* v. *merdarius*); L. 6-9 mm. [Sides of el. almost or quite parallel-sided.] **BOLITOBIOUS & PARABOLITOBIOUS**
4 (3). Joint 3 of ant. not or slightly longer than 2, last joint of palp distinctly elongate (Pl. 26,2-4); th. not entirely black; el. with at least 1 longitudinal row of punctures; L. 3.5-6 mm.
5 (6). El. generally somewhat dilated towards apex, hind-body strongly tapering, and last joint of palp as broad at base as penultimate (Pl. 26,2-4). **LORDITHON**

¹ MGT: this may not always be true - it is obviously elongate in *Parabolitobius inclinans* at least.

6 (5). El. quite or almost parallel-sided; hind-body slightly tapering, as *Parabolitobius* (Pl. 26,1); last joint of palp distinctly narrower at base than penultimate.
**BRYOPORUS & BRYOPHACIS**

MYCETOPORUS & ISCHNOSOMA

Front parts shining, glabrous, except setae at side margins (often rubbed off); hind-body pubescent, with setae at sides; eyes almost continuous with sides of hd.; th. broadest close to base, hind angles rounded; hind-body black, with hind margins of segments yellow, to entirely black; legs yellowish to yellowish-red; there are always 2 rows of punctures on the el., one starting from near shoulders, and one close to suture; there may be some punctures between these which are called "accessory rows"; in moss, dead leaves, etc., sometimes by sweeping.

Six species of *Mycetoporus* have been added since Joy (1932) which makes this key confusing and unreliable, particularly towards the end.

- 1 (4). Ant. long, reaching to about hind margin of el.², joints 9 and 10 quadrate (Pl. 25,6); hd. pitchy to reddish, th. yellow, el. reddish-yellow, often suffused with black, ant. fuscous yellow at base and apex, legs light yellow; L. 3.5-4.5 mm.**Ischnosoma**
- 2 (3). The row of punctures on el. from just inside shoulder consisting of 5-7 punctures (Pl. 25,6); hd. generally distinctly darker than th.; apex of underside of hind-body in ♂ characteristic (Pl. 25,7). [c.]..... **Ischnosoma splendidum**
- 3 (2). The row of punctures on el. consisting of 7-10 punctures; hd. unicolorous with th.; underside of hind-body in ♂ characteristic (Pl. 25,8). [Brit., Irel. M.; r.]
 **Ischnosoma longicorne**
- 4 (1). Ant. much shorter, reaching to about base of th., joints 9 and 10 transverse; EITHER (a) hd. black or nearly so, ant. black with base yellow; OR (b) hd. reddish, ant. reddish.
 **Mycetoporus**
- 5 (6). Joints 5-10 of ant. more transverse (Pl. 25,9); hd. reddish. [General shape as *punctus* (Pl. 25,10); th. and el. reddish-yellow, el. sometimes pitchy; el. without accessory punctures; L. 2.5-3.5 mm.; l.].....**Mycetoporus ambiguus, clavicornis or reichei**
 [See Schülke (2011) for a key and genitalia illustrations.]
- 6 (5). Joints 5-10 of ant. less transverse; hd. black.
- 7 (8). Each el. with 2 or 3 accessory rows of punctures with 10-15 in each. [General shape as *punctus* (Pl. 25,10), but el. not quite so transverse; th. with 2 punctures on each side of disc; th. reddish-yellow, el. reddish- yellow to pitchy with base yellowish; L. 4-5.5 mm.; Eng., Scot. 2,4, Irel.; l.].....**Mycetoporus rufescens**
- 8 (7). Each el. without, or with 1-7 accessory punctures.
- 9 (10). Th. black, with base broadly yellow, el. black with a mark close shoulders and hind margin yellow; hind-body more diffusely punctured than in all others of the genus. [General shape as *baudueri* (Pl. 25,13); el. without accessory punctures; L. 2.5-3.2 mm.; l.]
 **Mycetoporus angularis**
- 10 (9). Th. and el. unicolorous red or black, shoulders sometimes lighter in *brunneus*.
- 11 (12). Th. and el. more transverse, hind-body more tapering, and el. with 1 or 2 accessory punctures (Pl. 25,10). [Th. and el. reddish; L. 3-4 mm.; Brit., Irel. M.; r.]
**Mycetoporus punctus**
- 12 (11). Th. less transverse; el. less transverse or quadrate, and hind-body less tapering (Pl. 25,11,13).

² MGT: or at least clearly past base of thorax.

- 13 (14). Th. without a puncture on disc; el. without an accessory puncture; L. 4.5-5.5 mm. [Th. black, el. red, hind-body sometimes entirely black, and legs sometimes piceous; Eng., Irel., M.; l.] ***Mycetoporus nigricollis***
- 14 (13). Th. with or without a puncture on disc; el. with accessory punctures.
- 15 (16). Th. with 1 or 2 punctures on each side of disc, 1 or 2 accessory punctures on el. (Pl. 25,11); L. 3.5-5 mm. [Reddish to black, or th. black and el. red (*longulus*); c.]..... ***Mycetoporus lepidus, longulus, despectus or bimaculatus***
- 16 (15). Th. without a puncture on disc; 2-7 accessory punctures on el.; L. 3.2-3.8 mm.
- 17 (18). Ant. with joints 8-10 more transverse, and penultimate joint of palp less elongate (Pl. 25,12); colour and punctures on el. as *baudueri*. [Eng. N., Scot. 2,4; r.; on mountains.] ***Mycetoporus monticola***
- 18 (17). Ant. with joints 8-10 less transverse, and penultimate joint of palp more elongate (Pl. 25,13).
- 19 (20). Th. and el. reddish; shoulder row of punctures 5-8, accessory row 2-5. [Eng.; r.; generally on low ground.] ***Mycetoporus piceolus or erichsonianus***
- 20 (19). Th. and el. black; shoulder row of punctures 10-12, accessory row 5-7 (Pl. 25,13). [Brit., Irel. U.; r.]..... ***Mycetoporus baudueri or erichsonianus***

BOLITOBIOUS & PARABOLITOBIOUS

Joint 11 of ant. longer in ♂ than ♀; legs yellow; in moss, roots of grass, etc.

Hodge & Jones (1995) mention *Parabolitobius formosus* (as *Bolitobius formosus*), "omitted by Joy as doubtfully British", a species with no reliable British record (Duff, 2008).

- 1 (2). Entirely reddish-yellow, except hd. and base of segments of hind-body pitchy; el. evenly, rather strongly and closely punctured throughout. [L. 6.5-7.5 mm.; Brit.; r.] ***Parabolitobius inclinans***
- 2 (1). Shining black (except *Bolitobius castaneus* v. *merdarius*, with th. red), el. and apex of hind-body red; el. almost impunctate, or with 1-3 indefinite rows of punctures between shoulders and row by suture.
- 3 (4). Ant. black, except joints 1-2 and 11 yellow; L. 7-9 mm. [vl.] ***Bolitobius cingulatus***
- 4 (3). Ant. black, except joints 1-3 or 4 yellow³; L. 6-7 mm. [c.]..... ***Bolitobius castaneus***

LORDITHON

Hd. black, ant. black with base yellow, palpi and legs yellow; in fungi, especially in the autumn.

- 1 (2). Hd. elongate, and el. black with a well-defined mark at shoulder, and hind margin yellow (Pl. 26,2). [Th. yellowish-red, hind-body reddish-yellow, apex black, joint 11 of ant. yellow; L. 5-7 mm.; c.] ***lunulatus***
- 2 (1). Hd. transverse (Pl. 26,3,4); el. from entirely yellow to pitchy around scutellum and outer angles. [Th. entirely reddish-yellow to disc black, hind-body yellow, with base of segments generally pitchy.]
- 3 (4). Row of punctures from shoulders of el. consisting of 4-7 punctures; ant. with joint 1 straight and broader, 6-10 more transverse (Pl. 26,3). [ventral segment 6 of hind-body in ♂ simple (i.e. completely unmodified); L. 2.5-4.5 mm.; c.]..... ***thoracicus***
- 4 (3). Row of punctures on el. 7-15, and ant. with joint 1 slightly curved and narrower, 6-10 less transverse (Pl. 26,4).

³ MGT: 11th segment may be lighter than preceding segments.

- 5 (6). Th. very finely bordered at base; row of punctures on el. 7-11; ventral segment 6 of hind-body in ♂ with a slightly raised longitudinal keel in middle, and a smooth flat space behind it. [L. 4-6 mm.; c.] **trinotatus**
 6 (5). Th. not bordered at base; row of punctures on el. 11-15 (Pl. 26,4); ventral segment 6 of hind-body in ♂ simple. [L. 3.5-4.5 mm.; l.]..... **exoletus**

BRYOPORUS & BRYOPHACIS

Ant. black with base yellow, joints 8-10 transverse; legs reddish-yellow; in moss.

- 1 (2). Th. very finely and rather closely punctured. [Shining black, el. and hind margins of segments of hind-body red; el. as *Bryophacis crassicornis*; L. 4.5-5.5 mm. Eng. S. to Leicester, Irel. U.; vr.]..... **Bryoporus cernuus**
 2 (1). Th. unpunctured. [On mountain tops.]
 3 (4). Pitchy-black, el., and sometimes th., pitchy-red; el. diffusely punctured between humeral row of punctures and suture, and slightly longitudinal striate towards apex. [L. 4-5 mm.; Scot. 1,4; vr.] **Bryophacis rugipennis**
 4 (3). Reddish, hd. pitchy; el. unpunctured between rows of punctures. [L. 3.5-4.5 mm.; Eng. N., Scot. 2; vr.] **Bryophacis crassicornis**

TACHYPORINI

Members of the Tachyporini will be much more frequently encountered than the Mycetoporini and include some of the commonest and most generalist of British staphylinids.

KEY TO GENERA

- 1 (4). Hd. and th. pubescent, best seen on the side away from light. [Sides of th. and el. without setae, except of el. of *Sepedophilus bipunctatus*.]
 2 (3). Hind-body with well-marked side-borders. Two aleocharine genera placed here because the general shape so much resembles the Tachyporinae.
 (**OXYPODA, MYLLAENA**)
 3 (2). Hind-body without, or with very slight, side-borders (Pl. 26,5)..... **SEPEDOPHILUS**
 4 (1). Hd. and th. glabrous.
 5 (8). Side margins of th. and el. with setae, very short in *Tachyporus scutellaris*, etc.; hind-body with a seta on side of each segment just within side-border, as well as seta at side, and last joint of maxillary palp much shorter than penultimate (Pl. 26,7).
 6 (7). Ant. shorter, joints 8-10 strongly transverse (Pl. 26,6). **LAMPRINODES**
 7 (6). Ant. longer, joints 8-10 not, or slightly, transverse (Pl. 26,7). **TACHYPORUS**
 8 (5). Side margins of th. and el. without setae; segments of hind-body without setae just within side-border; last joint of maxillary palp at least as long as penultimate.
 9 (10). El. light yellow, with well-defined black marks, and segments 1-5 of hind-body with long setae at sides (Pl. 26,10)..... **CILEA**
 10 (9). El. not light yellow; segments 5 and 6 of hind-body only with setae at sides, except *T. lignorum*..... **TACHINUS**

SEPEDOPHILUS

Entirely very finely punctured and pubescent; legs yellow.

Joy's key to this genus (which he regarded as containing only 6 species) is best ignored as there is an excellent key to all 9 British species by Peter Hammond (1973) in *Entomologist's monthly magazine* **108** (for 1972): 130 - 165.

- 1 (2). Sides of el. with long outstanding setae; joint 5 of ant. transverse. [Black, base of el. and area around suture, base of ant. and joint 11 yellowish-red; L. 2.4-2.6 mm.; Eng. S.E.; vr.; in rotten wood.]**bipunctatus**
- 2 (1). Sides of el. without setae; joint 5 of ant. elongate.
- 3 (4). Pitchy, with a broad area around hind angles of th., and a mark at base of el. yellow. [L. 4-6 mm; Brit.; 1.; chiefly in faggot stacks.]..... **littoreus**
- 4 (3). Th. and el. without definite yellow marks.
- 5 (6). L. 4-5.5 mm. [El. as *immaculatus*; th. black, el. black or reddish, ant. pitchy with base and apex yellow; c.; in vegetable refuse.].....
..... **marshami, constans, lusitanicus or testaceus**
- 6 (5). L. 2.5-3.5mm.
- 7 (8). El. less transverse (Pl. 26,5); ant. pitchy with base and apex yellow; L. 3-3.5 mm [Pitchy to pitchy-red; Eng., Irel. L., M.; l.; in moss, etc.].....**immaculatus**
- 8 (7). El. more transverse; ant. entirely yellow; L. 2.5-3 mm.
- 9 (10). Pitchy-black; el. slightly shorter than th., more transverse. [Eng., Irel. M.; vl.; chiefly in sedge refuse.] **pedicularius**
- 10 (9). Reddish-yellow; el. about as long as th., less transverse. [c.; at roots of grass, etc.].....
.....**nigripennis**

LAMPRINODES

General shape as *Tachyporus*; red, hd. and hind-body, except hind margins of segments, black; apical joints of ant. much flattened; L. 4-5 mm.; Eng.; r.; Scot. 1,4, Irel.; vr.; under stones in early spring, generally with ants. **saginitus**

TACHYPORUS

Ant. yellow, generally darker towards apex, legs yellow. May be found in almost any situation, and they run very rapidly.

Joy's key to *Tachyporus* places rather too much faith in colour patterns. Roger Booth produced a key to British *Tachyporus* which works even for teneral specimens by using the number and positions of hairs on the elytra. It takes some practice to be able to see these and to interpret their positions but this has proved to be the best approach to reliable *Tachyporus* identification.

Roger's key in the journal *Circaea* has open copyright and is available for download from here: <http://www.envarch.net/publications/circaea/circaea-2.1.html>.

However, I went to the BENHS staphylinid workshop on 28th February 2009 where Roger distributed a draft of a much improved *Tachyporus* key. Roger doesn't want this key to go online yet as he plans to publish it so if you can't wait to get your hands on a copy, you could ask Roger (or anyone who went to the workshop) for a draft.

Sooner or later you will find a *Tachyporus* which just will not key out and after double- and triple-checking you may begin to feel the thrill of having discovered a species new to Britain.

Well, this happened to me and my bubble was burst when I realised I'd overlooked the existence of *Lamprinodes saginatus* which looks just like a *Tachyporus* apart from its shorter antennae.

- 1 (8). El. black towards base, and yellow towards hind margin, these two colours being somewhat abruptly separated from one side to the other (Pl. 26,7). [Setae at sides of th. and el. as long as joint 1 of ant.]
- 2 (3). Ant. with joint 7 quadrate, 8-10 transverse; th. generally with front third pitchy; L. 2.3-3.3 mm. [Hd. black, el. with line of demarcation between black and yellow about, or just behind, middle, hind-body black with hind margins of segments yellow; Eng., Scot. 1,4, Irel. M.; l.; marshy and heathery places.]..... **transversalis**
- 3 (2). Ant. with joints 7-10 quadrate⁴; th. unicolorous yellow, or with disc pitchy; L. 3-4.5 mm.
- 4 (5). Hd. yellow, th. unicolorous yellow, el. with line of demarcation between black and yellow about middle, and segments 5 and 6 of hind-body black (Pl. 26,7). [c.]..... **obtusus**
- 5 (4). Hd. black to pitchy-yellow, th. generally with disc pitchy, el. with line of demarcation near apex or base, hind-body black, except hind margins of segments yellow.
- 6 (7). Line of demarcation on el. a quarter to one-third from hind margin. [Eng., Irel. U.; vl.] ..
.....Joy's "*fasciatus* Nicholson, 1911", now synonymised with *chrysomelinus*
- 7 (6). Line of demarcation on el. one-third from base. [Brit.; r.; Irel.; c.].....
..... Joy's "*nitidicollis* Stephens, 1832", now synonymised with *obtusus*
- 8 (1). El. unicolorous, or if black and yellow these colours not abruptly separated from one another from one side to the other.
- 9 (14). Setae at sides of th. and el. very short, none as long as joint 1 of ant.
- 10 (11). Th. and el. yellow (more distinct in life), and el. with a large well-defined black triangular mark around scutellum; L. 2-3 mm. [Hd. black, segment 5 of hind-body black or yellow; Eng., Irel. C., M.; l.]..... **pallidus**
- 11 (10). Th. and el. reddish-yellow, without or with an obscure transverse mark around scutellum; L. 3-4.5 mm.
- 12 (13). Hd. and generally most of hind-body black, at any rate segment 5. [l.].....
..... **solutus**
- 13 (12). Hd. and most of hind-body reddish-yellow, at any rate segment 5. [Eng., Scot. 1,2, Irel.; r.]..... **formosus**
- 14 (9). Setae at sides of th. and el. long, some at least as long as joint 1 of ant.
- 15 (16). Th. convex; el. depressed, more distinctly punctured and pubescent, duller than th.; hind-body with at least apical half of segments 1-5 yellow. [Th. and el. more or less pitchy-yellow, palpi pitchy; joints 9 and 10 of ant. slightly transverse; L. 2-3 mm.; c.]..... **nitidulus**
- 16 (15). El. as convex as th., more transverse, less distinctly punctured and pubescent, as shining as th.; hind-body entirely black, or with at most apical third of segments 1-5 yellow. [Hd. black.]
- 17 (22). Th. black or pitchy, with sides and base somewhat abruptly yellow.
- 18 (19). Ant. with joints 8-10 elongate; palpi yellow; L. 3-4 mm. [El. reddish-yellow, with a triangular mark around scutellum, and generally sides, black, or unicolorous pitchy (v. *meridionalis* Fair.); c.]..... **hypnorum**
- 19 (18). Ant. with joints 8-10 quadrate; palpi black; L. 2.2-3.2 mm.
- 20 (21). El. less transverse, and distinctly longer in proportion to th., as in *tersus* (Pl. 26,9), reddish, with side margin and space around scutellum pitchy. [c.]..... **pusillus**
- 21 (20). El. slightly more transverse, and not so much longer in proportion to th., black to pitchy-red, apex narrowly lighter. [Eng. S. to Yorks.; r.]..... **scitulus**

⁴ MGT: or elongate.

- 22 (17). Th. entirely yellow, sometimes slightly darker on disc. [Ant. with joints 8-10 quadrate; el. pitchy-red to entirely reddish, or with sides and area around scutellum darker.]
 23 (24). Palpi light yellow; L. 2.6-3.6 mm. [vc.] **chrysomelinus or dispar**
 24 (23). Palpi black to fuscous; L. 2-3 mm.
 25 (26). Th. and el. more transverse, and el. shorter in proportion to th. (Pl. 26,8). [c.]
 **atriceps or quadriscopulatus**
 26 (25). Th. and el. less transverse, and el. longer in proportion to th. (Pl. 26,9). [Eng., Scot. 1,2, Irel.; l.]..... **tersus**

CILEA

Hd., th. and hind-body black, joints 1 and 2 of ant. and legs yellow; Eng., Scot. 1,2, Irel.; l.; in manure heaps, etc.....**silphoides**

TACHINUS

Hd. black, hind-body black, with hind margins of segments generally narrowly red, legs red to yellow; in the species with dark el. the hind margin is generally yellowish; chiefly in carrion, fungi, etc.

- 1 (2). El. with irregularly punctured striae; hind-body scarcely tapering. [Black, el. and generally margins of hind-body, ant. and legs pitchy-red; L. 6-8 mm.; Brit., Irel. U., L.; r.; in moss, etc.] **elongatus**
 2 (1). El. without a trace of striae; hind-body strongly tapering (Pl. 27,1-4).
 3 (10). El. quite smooth and very shining between punctures.
 4 (5). Th. entirely reddish, to somewhat fuscous on disc, ant. reddish; el. more transverse, more so than *laticollis* (Pl. 27,1). [El. reddish, rather darker than th.; L. 3-4 mm.; Eng. E., N., Scot.; l.; in moss, etc.]..... **corticinus**
 5 (4). Th. black, or with sides abruptly reddish, ant. black with base yellow.
 6 (7). El. bright red, sometimes with hind margins black; L. 6-7.5 mm. [Th. entirely punctured, very finely reticulate between punctures general shape as *laticollis* (Pl. 27,1); Eng., Scot. 4; vr.]..... **rufipennis**
 7 (6). El. black, with sides and apex more or less reddish; L. 3.5-5 mm.⁵
 8 (9). El. less transverse, longer in proportion to th., as *humeralis* (Pl. 27,4); th. quite smooth between punctures, margins abruptly yellowish. [c.].....
 **marginellus or flavolimbatus**
 9 (8). El. more transverse, shorter in proportion to th. (Pl. 27,1); th. very finely reticulate between punctures, margins obscurely reddish. [l.].....
 **laticollis or flavolimbatus**
 10 (3). El. finely reticulate between punctures, somewhat dull. [Th. very finely reticulate between punctures.]
 11 (12). Th. entirely black, or with sides gradually, to almost entirely, yellowish, el. with an abrupt yellowish mark on each by shoulder, extending beyond middle, or spreading over nearly whole, leaving only area around suture black. [General shape as *humeralis* (Pl. 27,4); L. 5-6.5 mm.; c.; in vegetable refuse, especially in winter.] **subterraneus**
 12 (11). Th. entirely black, or with sides rather abruptly reddish, el. unicolorous black or reddish, or sometimes with a somewhat obscure reddish or yellowish mark at shoulders only.

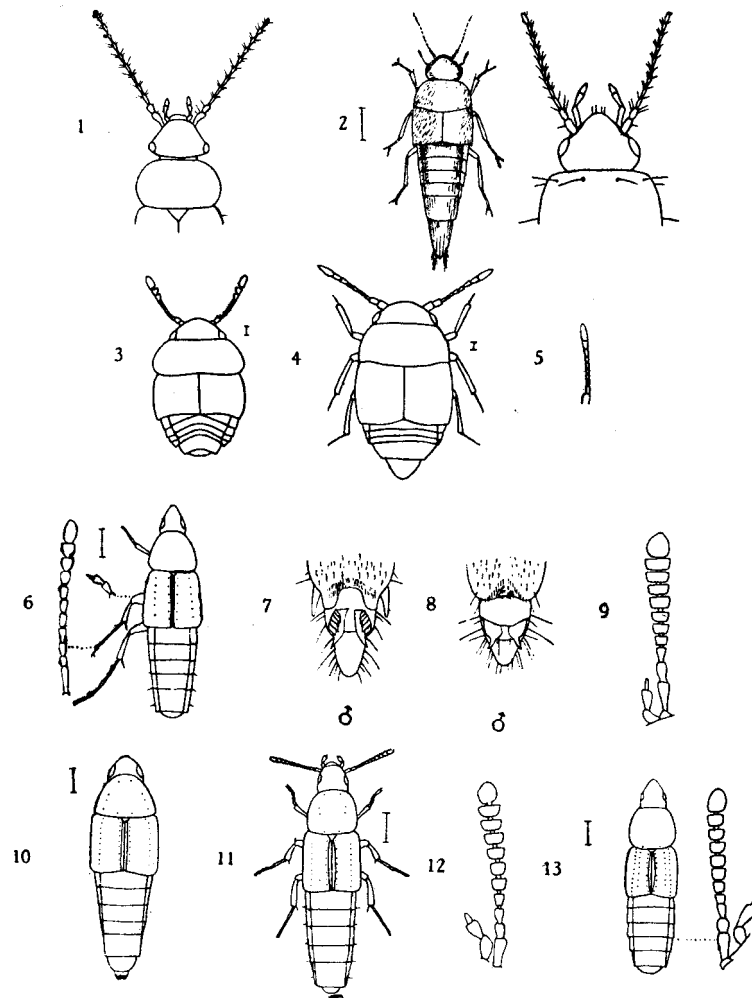
⁵ MGT: *T. flavolimbatus* has been added to the British list since Joy: the trio of *marginellus*, *laticollis* and *flavolimbatus* are best identified by reference to Freude, Harde & Lohse (1964) (volume 4, page 246).

- 13 (14). All the segments of hind-body with a long seta at sides; ant. entirely black.
 [Th. entirely black, el. pitchy-red; el. shaped as *laticollis* (Pl. 27,1); segment 6 of hind-body in ♀ as *proximus* (Pl. 27,8); L. 5-6.5 mm.; Brit.; r.] ***lignorum***
- 14 (13). Segments 5 and 6 only with setae at sides; ant. reddish or yellowish at base.
- 15 (16). Joints 6-10 of ant. transverse (Pl. 27,2); segment 6 of hind-body characteristic (Pl. 27,5); ant. entirely somewhat reddish, or pitchy towards apex, legs red to pitchy-red.
 [Th. entirely or almost entirely black, el. black with a small well-defined red mark at shoulders; shape of el. as *humeralis* (Pl. 27,4); L. 5-6.5 mm.; Eng. S. to Derby; r.]
 ***bipustulatus***
- 16 (15). Ant. with joints 6-10 quadrate; segment 6 of hind-body different; ant. black with base reddish-yellow, legs yellowish.
- 17 (20). Th. unicolorous black or narrowly red, the red not including front angles, front margin always black, hind margin sometimes very narrowly red at outer third; el. rather strongly transverse (Pl. 27,3).
- 18 (19). El. black, with a fairly well-defined yellowish mark at shoulders; segment 6 of hind-body as *pallipes* (Pl. 27,6). [L. 5-6.5 mm.; Eng.; r.] ***scapularis***
- 19 (18). El. black, sometimes obscurely reddish at shoulders; segment 6 of hind-body in ♂ as *pallipes* (Pl. 27,6), in ♀ as *proximus* (Pl. 27,8). [L. 4.5-6.5 mm.; c.] ***rufipes***
- 20 (17). Th. broadly reddish-yellow at sides, including front angles, and generally extending along front and hind margins; el. less transverse.
- 21 (22). El. black to pitchy-red, with base and shoulder lighter, in breadth intermediate between *humeralis* and *proximus*; segment 6 of hind-body characteristic (Pl. 27,6). [L. 4.5-6 mm.; Brit.; l.] ***pallipes***
- 22 (21). El. pitchy-red to reddish with base or shoulder lighter; segment 6 of hind-body characteristic.
- 23 (24). El. less transverse (Pl. 27,4); palpi generally red; segment 6 of hind-body characteristic (Pl. 27,7). [L. 5-7 mm.; c.] ***humeralis***
- 24 (23). El. more transverse, as *laticollis* (Pl. 27,1); palpi generally pitchy; segment 6 of hind-body characteristic (Pl. 27,8). [L. 4.5-6.5 mm.; Eng. N., Scot., Irel. C.; l.] ***proximus***

References

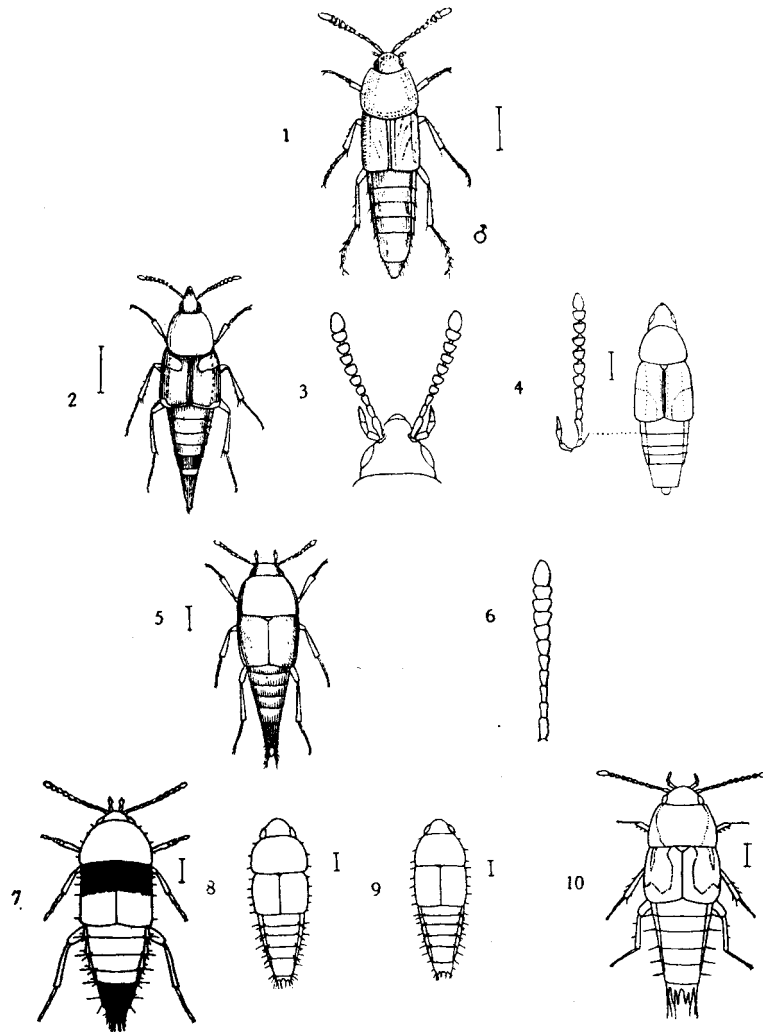
- Duff, A.G. (2008). *Checklist of beetles of the British Isles*. 2008 edition. Wells: A.G. Duff.
- Freude, H., Harde, K.W. and Lohse, G.A. (eds) (1964). *Die Käfer Mitteleuropas*. Band 45, Staphylinidae I (Micropeplinae bis Tachyporinae). Krefeld: Goecke & Evers.
- Hammond, P.M. (1973). Notes on British Staphylinidae 3. The British species of *Sepedophilus* Gistel (*Conosomus* auctt.). *Entomologist's monthly magazine*, **108** (dated '1972'), 130 - 165.
- Hodge, P.J. and Jones, R.A. (1995). *New British Beetles: species not in Joy's practical handbook*. Reading: British Entomological and Natural History Society.
- Joy, N.H. (1932). *A practical handbook of British beetles*. Two volumes. H.F. & G. Witherby. Reprinted in slightly reduced format in 1976 by E.W. Classey Ltd, Faringdon.
- Schülke, M. (2011). *Mycetoporus ambiguus* Luze, 1901 and *M. reichei* (Pandellé 1869) (Staphylinidae) - First records for the British Isles. 77th contribution to the knowledge of Tachyporinae. *The Coleopterist*, **20**, 105 - 109.

Plate 25



1. *Trichophya pilicornis* (Trichophyinae)
2. *Habrocerus capillaricornis* (Habrocerinae)
3. *Cypha discoidea* (Aleocharinae: Hypocyphtini)
4. *Cypha longicornis*
5. *Cypha apicalis* antenna
6. *Ischnosoma splendidum* (Tachyporinae)
7. *Ischnosoma splendidum*, underside of hind-body of ♂
8. *Ischnosoma longicorne*
9. *Mycetoporus ambiguus*, *clavicornis* or *reichei*, antenna
10. *Mycetoporus punctus*
11. *Mycetoporus lepidus* (or *longulus*/ *despectus*/ *bimaculatus* ?)
12. *Mycetoporus monticola*
13. *Mycetoporus baudueri* (or *erichsonianus*?)

Plate 26



1. *Parabolitobius inclinans*
2. *Lordithon lunulatus*
3. *Lordithon thoracicus*
4. *Lordithon exoletus*
5. *Sepedophilus immaculatus*
6. *Lamprinodes saginatus* antenna
7. *Tachyporus obtusus*
8. *Tachyporus atriceps*
9. *Tachyporus tersus*
10. *Cilea silphoides*

Plate 27

